



# A perspective from the Royal College of Speech and Language Therapists

Kamini Gadhok, MBE, CEO RCSLT

# Legal and administrative information



- The RCSLT was established on 6 January 1945
- The Charity is known as the Royal College of Speech and Language Therapists (the RCSLT)
- The RCSLT is also a company limited by guarantee
- The Memorandum and Articles of Association, which were last amended at AGM on 7 October 2015, govern the RCSLT
- Trading arm, known as CSLT Trading Ltd

# Staying relevant over the years



- External drivers (both policy and other)
  - What is our USP?
  - Role of the professional body vs others in the system and how we can add value
- Member needs
- Service user needs
- Working in partnership with others
- Internal structure (staffing and governance)
- Infrastructure e.g. digital

# Vision

**Enabling better lives for people with communication and swallowing needs**

# Purpose

**We are the professional body that promotes excellence in speech and language therapy**

# RCSLT strategic plan 2018-21: core messages



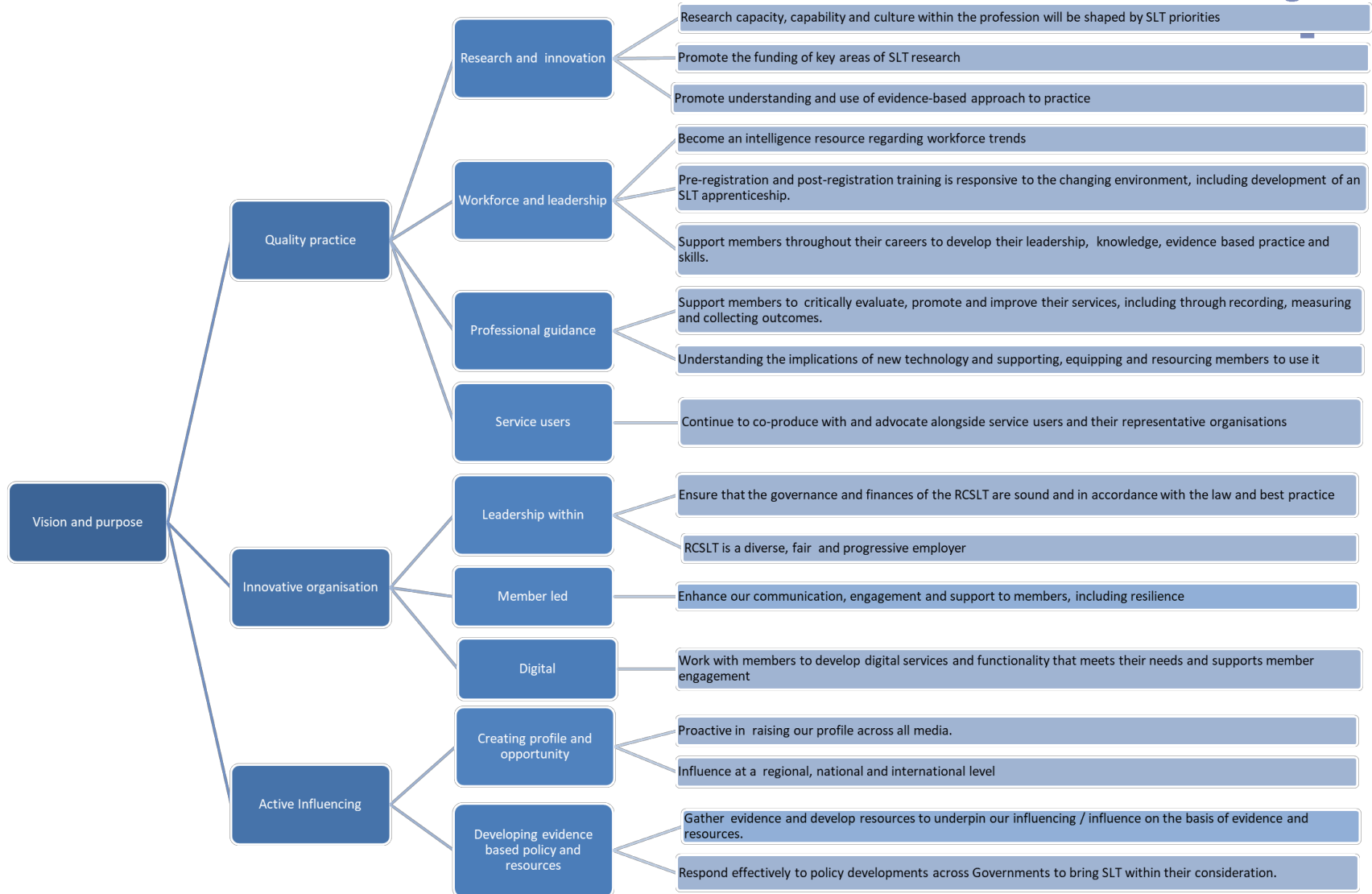
Purpose: We are the professional body that promotes excellence in speech and language therapy.



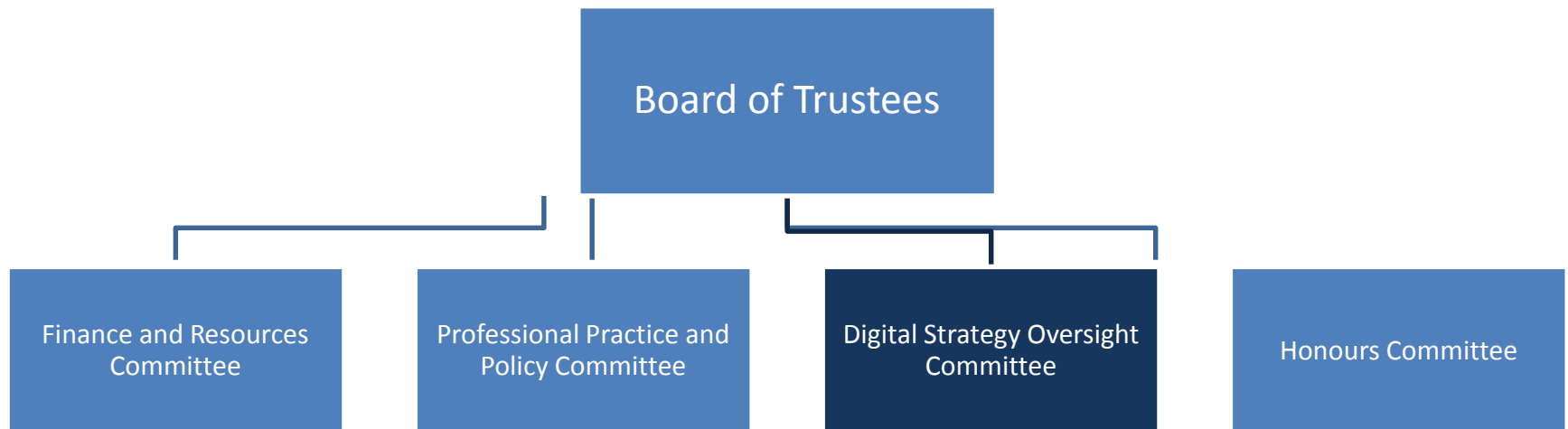
**Vision:**

Enabling better lives for people with communication and swallowing needs.

# Strategic Plan 2018-21 structure



# Governance structure



# Policy and Public Affairs





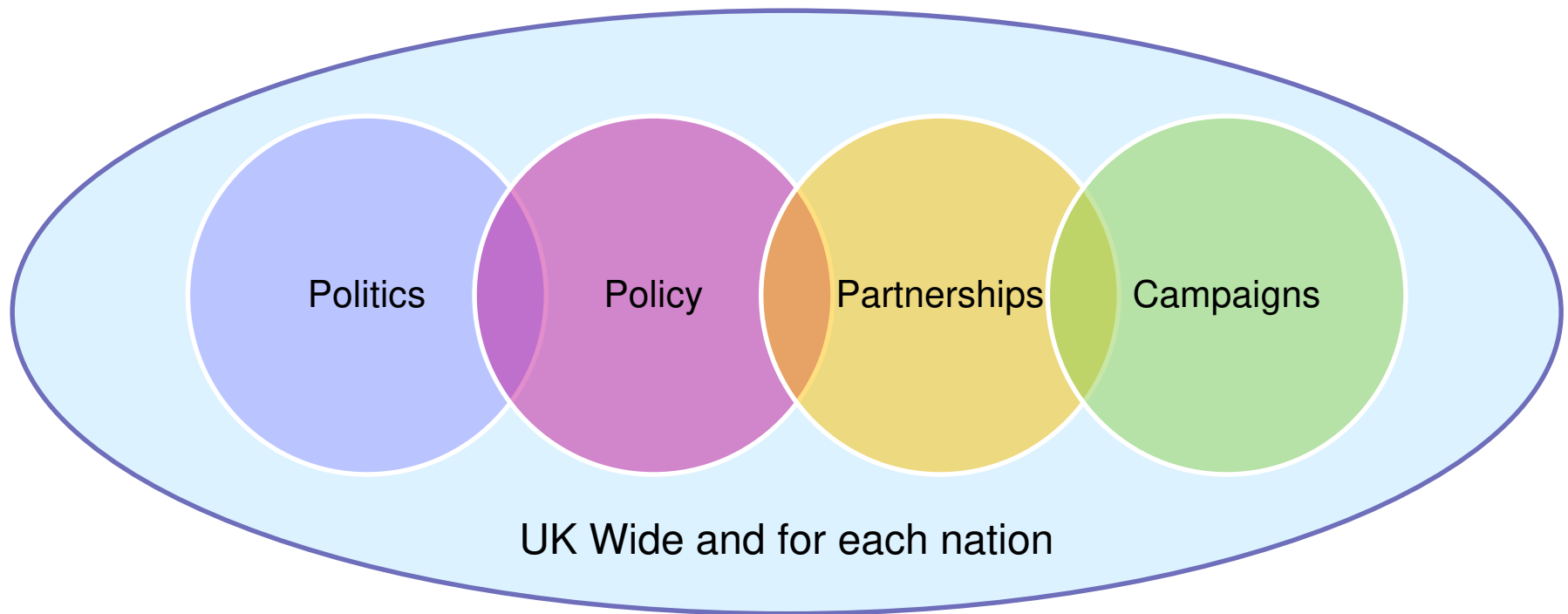
# Improving the lives of people with communication and swallowing needs



- The RCSLT's policy and public affairs team promotes the voice of speech and language therapists in parliaments and assemblies across the United Kingdom
- We work with decision-makers and our members to help improve health and education policy in England, Wales, Scotland and Northern Ireland



# Improving the lives of people with communication and swallowing needs



# Improving the lives of people with communication and swallowing needs



- Our work offers:
  - **Insight** into key issues affecting people with communication and swallowing needs.
  - **Intelligence** regarding national policy developments relating to speech and language therapy.
  - **Voice:** we promote the voice of speech and language therapists at a national and local level.
  - **Campaigning resources:** we produce resources that promote the value of speech and language therapy.
  - **Capacity building:** we support our member to influence locally.

# The team

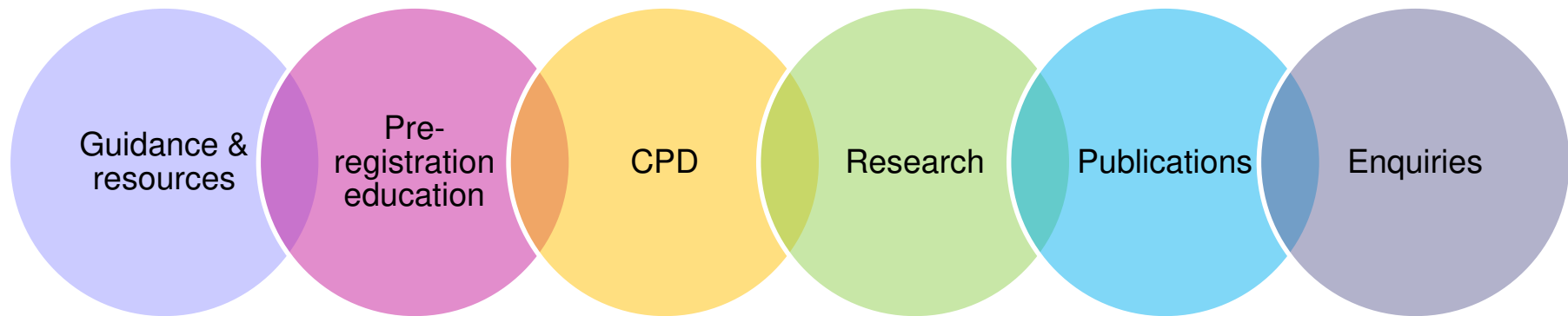


- Our Policy Advisers and Officers:
  - **Write briefings for external and internal audiences:** e.g. writing briefings for our Chief Executive, RCSLT members and MPs.
  - **Conduct desk based research and commission external research** regarding issues relating to speech and language therapy (e.g. our national return on investment research).
  - **Analyse and inform Government policy**, for example, ensuring RCSLT is represented on key decision-making bodies and responding to new political developments as they emerge.
  - **Produce resources and information for RCSLT members** to keep them updated on key political issues relating to speech and language therapy (e.g. the RCSLT's web pages on workforce planning and changes to student funding).

# Enabling better lives for people with communication and swallowing needs



Our work broadly falls into five areas:



# Professional Development Team



- Provides guidance to support members in meeting the standards of the regulator, the HCPC
- Supports members to develop, critically evaluate, promote and improve their services
- Supports members to record, measure and collect outcomes
- Supports, equips and resources members to understand and use new technology

# Professional Development Team



- Sets curriculum guidance for pre-registration SLT programmes
- Accredits for pre-registration SLT programmes
- Provides guidance for the delivery of clinical placements for SLT students
- Supports CPD

# Sources of CPD from RCSLT

## Events



**Conferences,  
study days &  
workshops**



## Getting involved



## Networking online



## Resources





# What the function does



- Consulting on and developing CPD and lifelong learning opportunities across the profession
- Collaborating beyond the organisation – for example via the Health and Care Professions Education Leads group; or feeding into CPD related consultations from the nations
- Developing learning resources which support SLCN understanding beyond the profession (e.g. The Box learning journey)
- Recruitment of Learning Champions
- Leadership Mentors recruitment and development
- Development of learning journeys
- Promotion of learning opportunities e.g. via @RCSLTLearn or our networks
- Managing the CPD website: [www.rcsltcpd.org.uk](http://www.rcsltcpd.org.uk)
- Providing support around eHealth work.streams

# Research and Development Team



## Strategic aims:

- Shape research capacity, capability and culture within the profession
- Promote the funding of key areas of SLT research
- Promote understanding and use of an evidence-based approach to practice

# Publications



## ■ Bulletin

- Bulletin is the monthly membership magazine of the RCSLT, which features clinical and professional content from members and key RCSLT staff. It has a readership of more than 17,000.

## ■ The RCSLT newsletter

- The RCSLT newsletter underwent a rebrand in January 2018 and has become a key communication channel for the organisation. Since January its readership has more than doubled – it is now sent to more than 15,000 people with an open rate of 30-40 per cent.

## ■ Other RCSLT publications

- These include the recent SLT careers booklet, factsheets, position papers, guidance and competency frameworks.

# Enquiries Team



- Provides individualised support and information about professional issues
- Supports members to access registered clinical advisers across a range of clinical and professional areas
- Acts as a central point for enquiries related to RCSLT projects, events and resources
- Provides administrative support to the Adviser Review Panel, Mutual Recognition Agreement working group, leadership mentor application process and survey review panel
- Leads on re-registration process of clinical advisers and clinical excellence networks
- Attends RCSLT events; acting as a point of contact for enquiries and to promote RCSLT resources

# Events





# Webinars

DLD

Local influencing

SENSATIONAL CENS

Dementia

Business skills

Research

SEND reforms

Outcomes

Information Governance



# Critical underpinning functions



- Finance
- Membership processing
- HR
- Contracting
- IT
- Digital
- Governance
- Buildings

# The Engagement 'Swish'

Adapted from Gideon Rosenblatt's Engagement Pyramid

