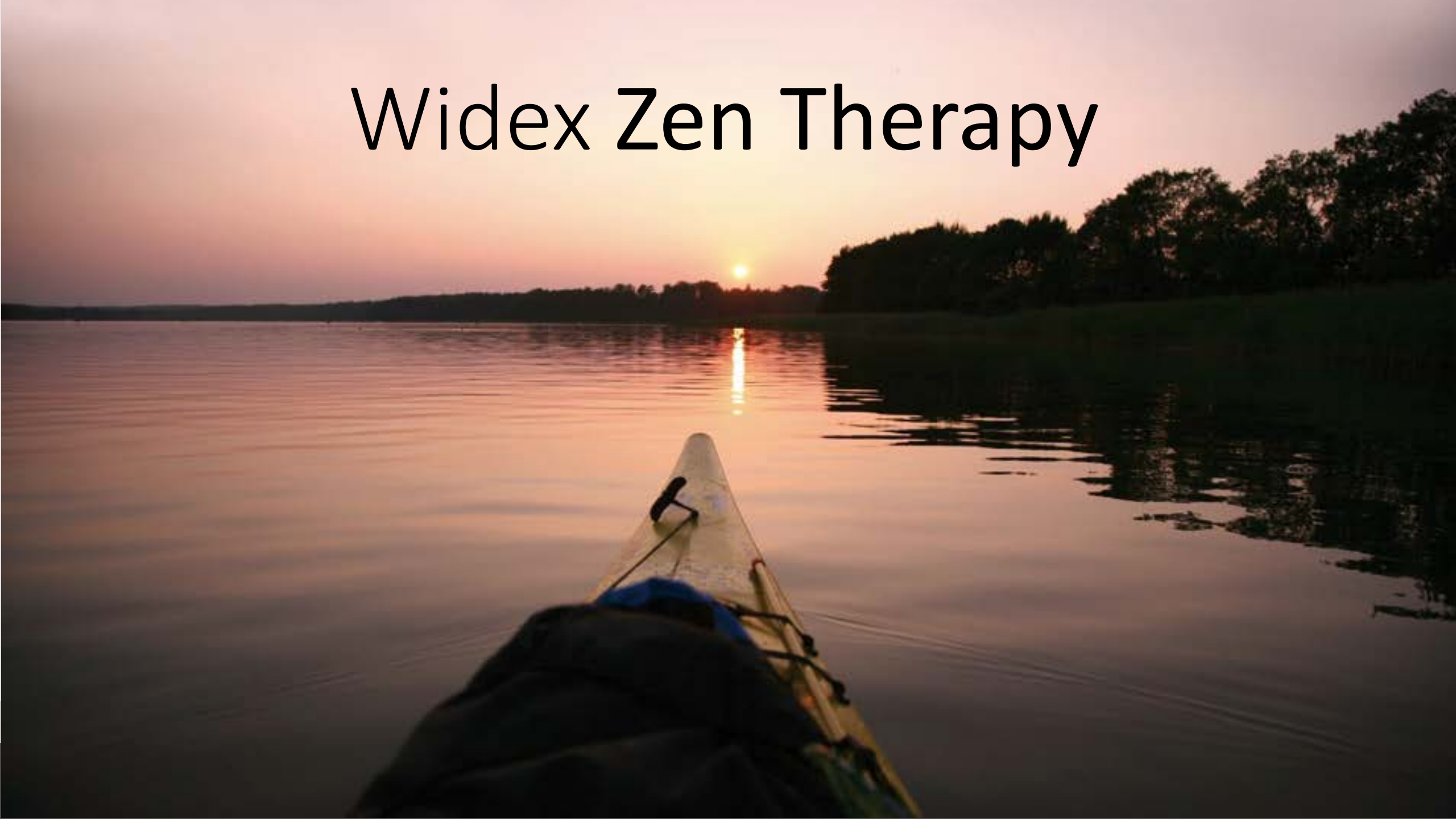


# Widex Zen Therapy



# Some facts:

- **15-20%** of the general population have experienced tinnitus
- **80%** of Tinnitus patients have some evidence of hearing loss.
- More than **70%** of hearing-impaired individuals have had tinnitus
- **10-25%** of tinnitus sufferers seek medical attention



# Treatment methods

- Amplification
- Tinnitus maskers
- Sound therapy
- Widex Zen

# The Zen Program



Available on all Widex hearing instruments

- Natural sound quality with very low compression knee points
- Generate fractal tones (Zen tones)
- Zen tones can help patients relax



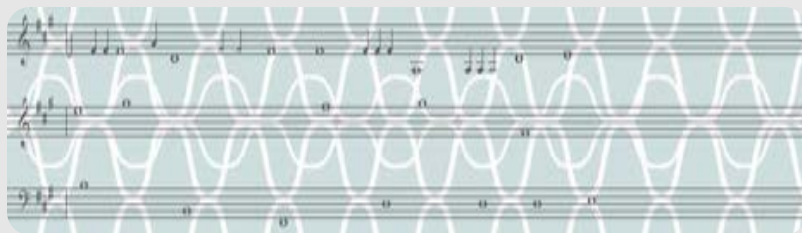
# The Widex Zen Therapy

- A harmonic sound program
- Offers a choice of soothing tones and chimes
- Based on fractal technology
- Predictable without repeating themselves

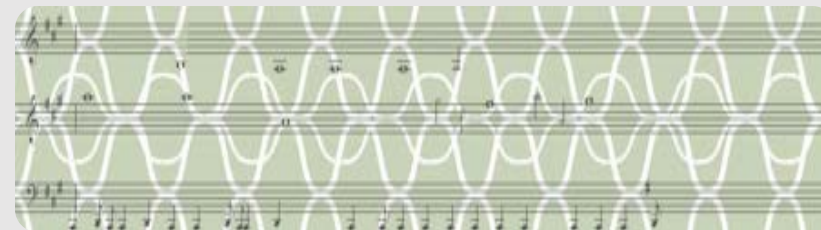


# The Widex Zen therapy

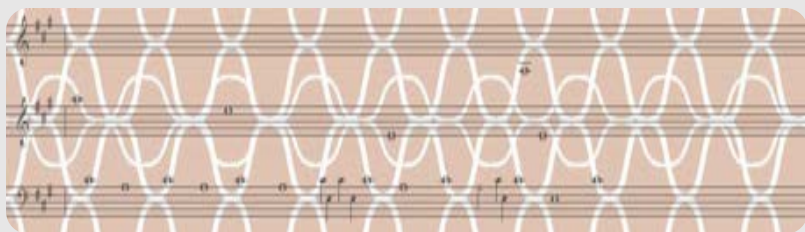
Zen aqua



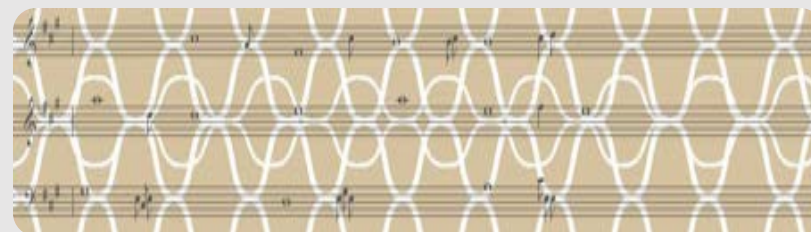
Zen green



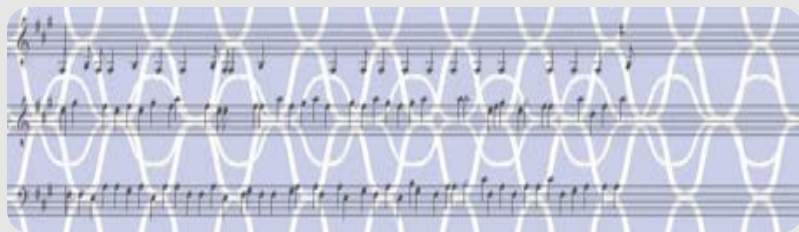
Zen coral



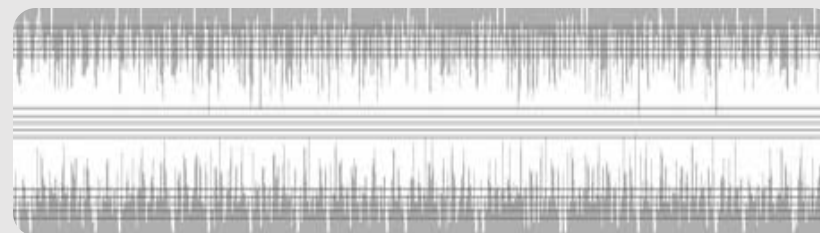
Zen sand



Zen lavender



Zen noise









Setting up the Zen programs



SESSION START

SELECTION

FITTING

FINE TUNING

LOG

HANDLING



END SESSION

REMOTE CARE (Sign Up)



Connect



Tuning all programs

P2



Program manager

FINE TUNING



Tuning



Feature settings

MORE TOOLS



Solution Guide



Adaptation



Audibility Extender



Feedback manager



MPO manager



Verification

## Available programs

## Automatic programs

Universal

PureSound

## Additional programs

Quiet

Transport

Urban

Social

Party

Music

## Special programs

Impact

Comfort

Zen/Relax

Phone

## SmartToggle

Zen+/Relax+



## Selected programs



P1



PureSound

Rename



P2



Universal

Rename



P3



Music

Rename



P4



Zen/Relax

Rename



Program base: PureSound



P5



i Program descriptions

SESSION START

SELECTION

FITTING

FINE TUNING

LOG

HANDLING



END SESSION

REMOTE CARE (Sign Up)



Connect



P4 Zen/Relax

Program manager

FINE TUNING

Tuning

Feature settings

MORE TOOLS

Solution Guide

Adaptation

Audibility Extender

Feedback manager

MPO manager

Verification

R

L



Zen - aqua. Not playing

Style selection

Gain and compression

Sound classes

Available Relax styles

winter

blossom

summer

swells

breeze

autumn

spring

seaside

Available Zen styles

aqua

coral

green

lavender

sand

noise



Selected style

Zen - aqua



Volume



Demonstrate styles through loudspeakers

SESSION START

SELECTION

FITTING

FINE TUNING

LOG

HANDLING



END SESSION



L

REMOTE CARE (Sign Up)



P5 Zen/Relax-2

Program manager

FINE TUNING

Tuning

Feature settings

MORE TOOLS

Solution Guide

Adaptation

Audibility Extender

Feedback manager

MPO manager

Verification

## Style settings

aqua

R



L

☐ Microphone

Noise options

No noise

Turn the hearing aid microphone on or off for the selected style

Slow Fast

Pitch

Low High

Tone volume

Min Max

Noise volume

Min Max

Wave noise volume

Min Max

☒ Microphone

Noise options

No noise

Tempo

Slow Fast

Pitch

Low High

Tone volume

Min Max

Noise volume

Min Max

Wave noise volume

Min Max

OK

Cancel

sand

noise



Demonstrate styles through loudspeakers

Volume



SESSION START

SELECTION

FITTING

FINE TUNING

LOG

HANDLING



END SESSION

REMOTE CARE (Sign Up)



Connect



Tuning all programs

⏮ P2

Program manager

## FINE TUNING



Tuning



Feature settings

## MORE TOOLS



Solution Guide



Adaptation



Audibility Extender



Feedback manager



MPO manager



Verification

## Available programs

## Automatic programs

Universal

PureSound

## Additional programs

Quiet

Transport

Urban

Social

Party

Music

## Special programs

Impact

Comfort

Zen/Relax

Phone

## SmartToggle

Zen+/Relax+



## Selected programs



P1



PureSound

Rename



P2



Universal

Rename



P3



Music

Rename



P4



Zen/Relax

Rename



Program base: PureSound



P5



Zen/Relax-2

Rename



Program base: PureSound



Program descriptions

SESSION START

SELECTION

FITTING

FINE TUNING

LOG

HANDLING



END SESSION

REMOTE CARE (Sign Up)



Connect



P4 Zen/Relax

Program manager

FINE TUNING

Tuning

Feature settings

MORE TOOLS

Solution Guide

Adaptation

Audibility Extender

Feedback manager

MPO manager

Verification

R

L



Zen - aqua. Not playing

Style selection

Gain and compression

Sound classes

Available Relax styles

winter

blossom

summer

swells

breeze

autumn

spring

seaside

Available Zen styles

aqua

coral

green

lavender

sand

noise



Selected style

Zen - aqua



Volume



Demonstrate styles through loudspeakers



SESSION START

SELECTION

FITTING

FINE TUNING

LOG

HANDLING



END SESSION

REMOTE CARE (Sign Up)



P5 Zen/Relax-2

Program manager

FINE TUNING

Tuning

Feature settings

MORE TOOLS

Solution Guide

Adaptation

Audibility Extender

Feedback manager

MPO manager

Verification

## Style settings

aqua

R



L

☒ Microphone

Noise options

No noise

Tempo



Slow

Fast

Pitch



Low

High

Tone volume



Min

Max

Noise volume



Min

Max

Wave noise volume



Min

Max

☒ Microphone

Noise options

No noise

Tempo



Slow

Fast

Pitch



Low

High

Tone volume



Min

Max

Noise volume



Min

Max

Wave noise volume



Min

Max

OK

Cancel

Volume



sand

noise



Demonstrate styles through loudspeakers

SESSION START

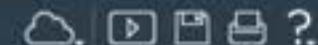
SELECTION

FITTING

FINE TUNING

LOG

HANDLING



END SESSION

REMOTE CARE (Sign Up)



Connect



Tuning all programs

P2



Program manager

FINE TUNING



Tuning



Feature settings

MORE TOOLS



Solution Guide



Adaptation



Audibility Extender



Feedback manager



MPO manager



Verification

## Available programs

## Automatic programs

Universal

PureSound

## Additional programs

Quiet

Transport

Urban

Social

Party

Music

## Special programs

Impact

Comfort

Zen/Relax

Phone

## SmartToggle

Zen+ /Relax+



## Selected programs



P1



PureSound

Rename



P2



Universal

Rename



P3



Music

Rename



P4



Zen/Relax

Rename



Program base: PureSound



P5



Zen/Relax-2

Rename



Program base: PureSound



Zen+ /Relax+



Program base: PureSound



i Program descriptions



SESSION START

SELECTION

FITTING

FINE TUNING

LOG

HANDLING



END SESSION

REMOTE CARE (Sign Up)



Connect



Zen+/Relax+

Program manager

FINE TUNING

Tuning

Feature settings

MORE TOOLS

Solution Guide

Adaptation

Audibility Extender

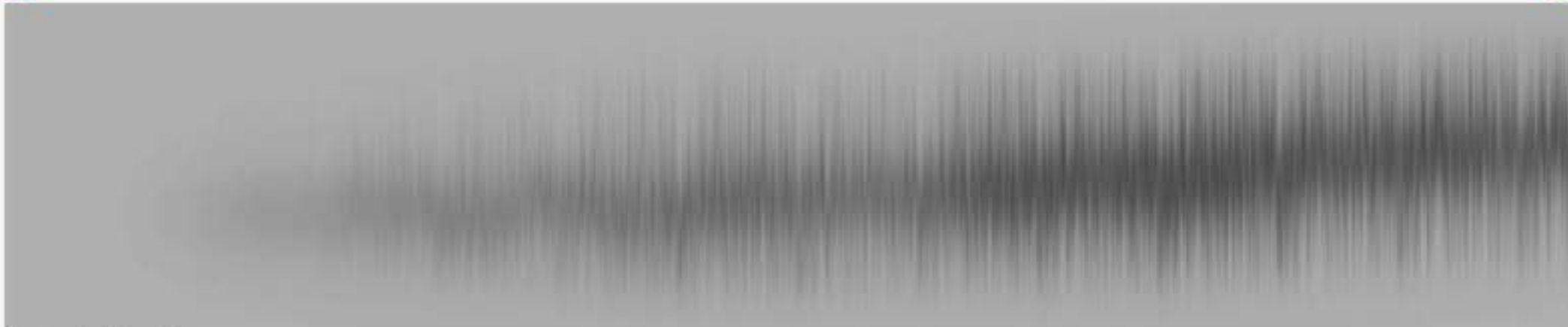
Feedback manager

MPO manager

Verification

R

L



Zen - noise. Not playing

Style selection

Options

Gain and compression

Sound classes

## Available Relax styles

winter

blossom

summer

swells

breeze

autumn

spring

seaside

## Available Zen styles

aqua

coral

green

lavender

sand

noise

noise shaped

→ A

→ B

→ C

## Selected styles



A Zen - coral



B Zen - green



C Zen - noise



Volume



Demonstrate styles through loudspeakers

SESSION START

SELECTION

FITTING

FINE TUNING

LOG

HANDLING



END SESSION

REMOTE CARE (Sign Up)



Connect



Zen+/Relax+

Program manager

FINE TUNING

Tuning

Feature settings

MORE TOOLS

Solution Guide

Adaptation

Audibility Extender

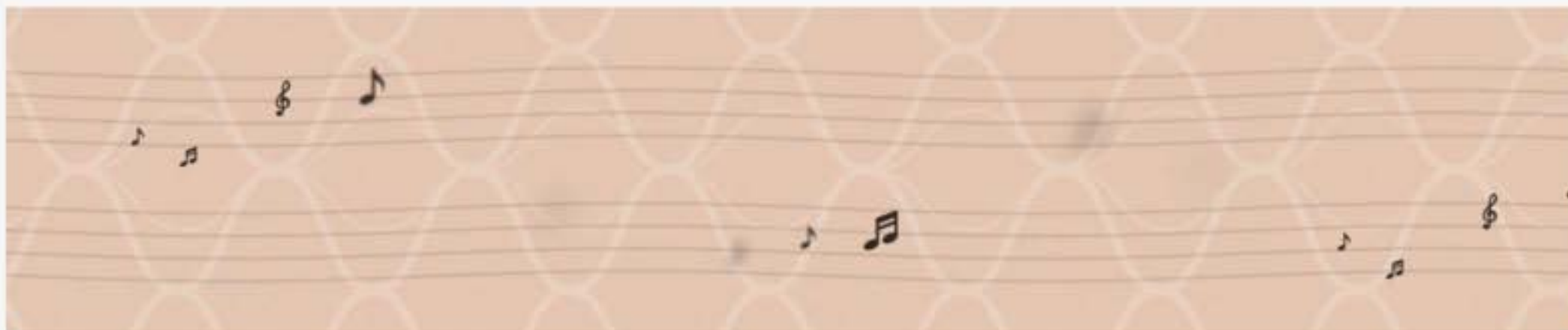
Feedback manager

MPO manager

Verification

R

L



Zen - coral. Not playing

Style selection

Options

Gain and compression

Sound classes

Limited play time

☒ A coral☐ B green☐ C noise

Limited play time duration

18 minutes

Preference control effect on Zen+/Relax+

☒ Regulate style volume☐ Regulate microphone and style volume

SESSION START

SELECTION

FITTING

FINE TUNING

LOG

HANDLING



END SESSION

REMOTE CARE (Sign Up)



Connect



Tuning all programs

P2



Program manager

FINE TUNING



Tuning



Feature settings

MORE TOOLS



Solution Guide



Adaptation



Audibility Extender



Feedback manager



MPO manager



Verification

## Available programs

## Automatic programs

Universal

PureSound

## Additional programs

Quiet

Transport

Urban

Social

Party

Music

## Special programs

Impact

Comfort

Zen/Relax

Phone

## SmartToggle

Zen+ /Relax+



## Selected programs



P1



PureSound

Rename



P2



Universal

Rename



P3



Music

Rename



P4



Zen/Relax

Rename



Program base: PureSound



P5



Zen/Relax-2

Rename



Program base: PureSound



Zen+ /Relax+



Program base: PureSound



Program descriptions



SOUND LIKE NO OTHER